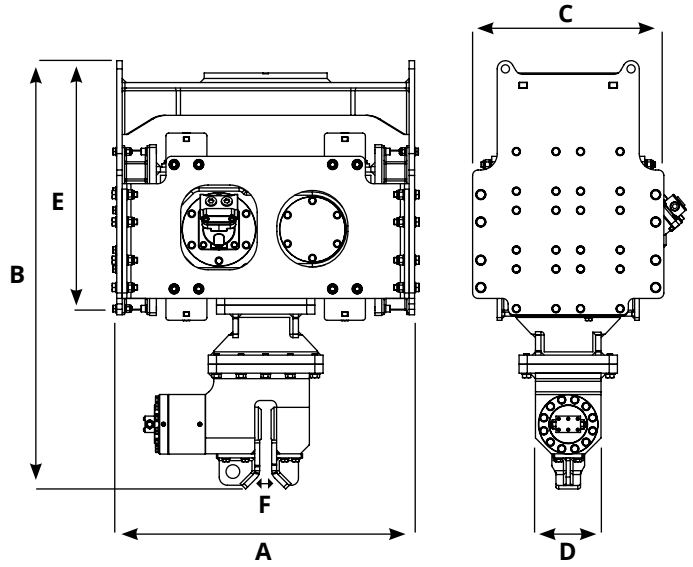


sheetPileFix

STRONG

VIBRODRIVER FOR SHEET PILES



SHEET PILEFIX	W2 K4 STRONG	W2 K6 STRONG
A (mm)	1210	1210
B (mm)	1360	1360
C (mm)	780	780
D (mm)	240	240
E (mm)	940	940
F (mm)	36	36
Weight (Kg)	1460	1480
Engine (CC)	63	63
Hydraulic Fluid Flow Rate (L/Min)	145	145
Pressure (BAR)	200/300	200/300
Vibration Rate (RPM)	2.300	2.300
Centrifugal force (Kn)	250	360
Kilogrammeters (KGM)	4,3	6,2
Hertz	38	38

1



2



3



4



5



6



1

2-HOSES VALVE KIT - W2 K4 K6

Kg.

50

2

PUSHBUTTON

/

3

SINGLE PIN MACHINE ATTACHMENT - W2 K4 K6

/

4

ATTACHMENT SETUP - W2 K4 K6

55

5

MECHANICAL ROTATION - W2 K4 K6

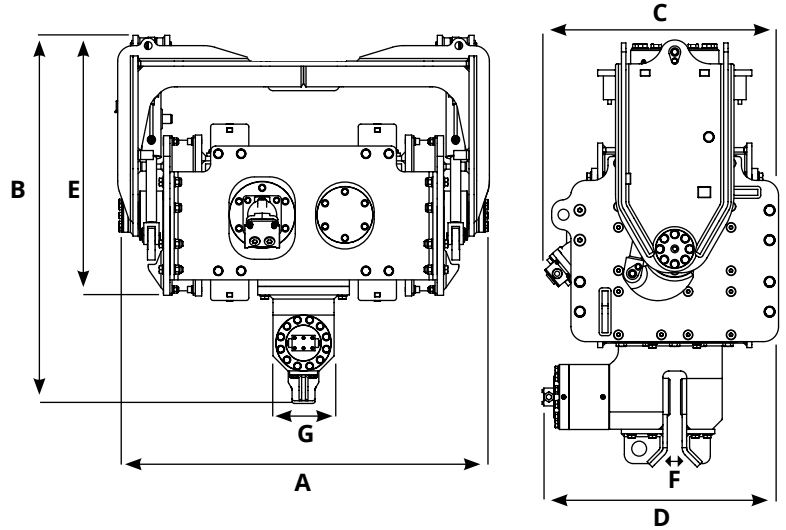
57

6

ADAPTER FOR 90° CLAMP

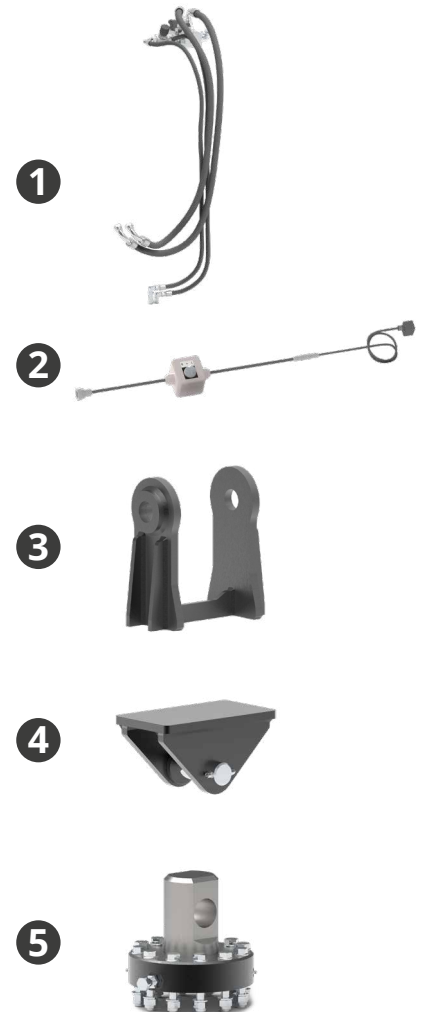
95

TILT



SHEET PILEFIX	W2 K4 TILT	W2 K6 TILT
A (mm)	1460	1460
B (mm)	1260	1260
C (mm)	790	790
D (mm)	800	800
E (mm)	1030	1030
F (mm)	36	36
G (mm)	240	240
Weight (Kg)	1660	1680
Engine (CC)	63	63
Hydraulic Fluid Flow Rate (L/Min)	145	145
Pressure (BAR)	200/300	200/300
Vibration Rate (RPM)	2.300	2.302
Centrifugal force (Kn)	250	360
Kilogrammeters (KGM)	4,3	6,2
Hertz	38	38

	Model	Kg.
1	2-HOSES VALVE KIT - W2 K4 K6	50
2	PUSHBUTTON	/
3	SINGLE PIN MACHINE ATTACHMENT - W2 K4 K6	/
4	ATTACHMENT SETUP - W2 K4 K6	55
5	MECHANICAL ROTATION - W2 K4 K6	57



This machine requires a hydraulic supply with 3 double effect lines + drainage, or n°2 double effect lines with solenoid valve + drainage